

Position of Filters for 5-Stage Reverse Osmosis System

Stage 4:
Membrane
(Change every 18 Months)

Stage 5:
Chlorine, Taste and Odour
Reduction
(Change every 6 Months)



Stage 3:
(1 Micron)
Sediment filter
Dirt and rust removal

Stage 2:
(5 Micron)
Carbon Filter
Chlorine, taste and odour
reduction

Stage 1:
(5 Micron)
Sediment filter
Dirt and rust
removal

Please note to ensure optimum
quality of water stages 1, 2, 3
and 5 need to be changed every
6 months.

Filter Change

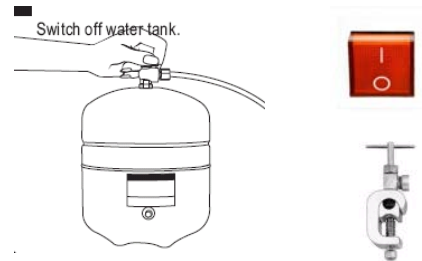
For optimum filtration under domestic use we recommend that the filters are changed at the following intervals.

Stage 1	5 Micron sediment Filter	6 Months
Stage 2	Carbon Block filter	6 Months
Stage 3	1 Micron sediment Filter	6 Months
Stage 4	Reverse Osmosis Membrane	18 Months
Stage 5	Post Carbon Filter	6 Months

Additional Filters

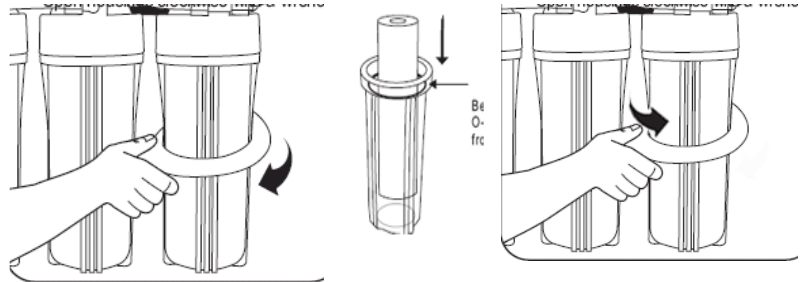
Ultra Violet Lamp	12 Months
Mineral Filter	12 Months
Alkaline Filter	12 Months
Infra Ray Filter	12 Months
De ionisation filter	12 Months

Before changing any of the filters on the system it is important that you take the Reverse Osmosis out of service mode. Turn off any electrical apparatus connected to the system. Switch the tank valve to the off position and fully close the diverter valve connected to the cold water supply. You must open the tap connected to the system to relieve any pressure build up.



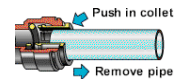
Replacing stage 1, 2 and 3 filters (6 Months)

Use the wrench provided to unscrew the housing. Remove the existing filter from the housing unit. Before fitting the new filter Remove any protective wrapping from the filters and fit from right (water inlet) to left in the following order, 5-micron filter, Carbon filter, 1-micron filter. Before fully tightening with the wrench check that any o-rings are sited correctly



Replacing the Post Carbon Filter (6 Months)

The replacement post carbon filter provided is supplied as a generic filter and can be used with either push or jaco fittings. You will first need to remove the tubes attached to the fittings on the installed filter. For jaco fittings simply unscrew the Jaco nut and pull out the tube. For push fittings, push the collet into the fitting and whilst the collet is depressed pull out the tube. Once you have removed the tubing unclip the filter from the RO system. Unscrew the fittings from the filter and screw into the new filter. Then simply clip the filter back onto the RO unit and replace the tube. For push fittings simply push the tube into the fitting. For Jaco style push the tube into the fitting and secure using the jaco nut



Replacing the Membrane (18 Months)

Follow the fitting the membrane guide on page 3 of these instructions, a pair of long nose pliers may be required to remove the membrane currently installed.

Putting Back into Service

Ensure that all connections are fully watertight. Fully open the water diverter valve located on the cold water pipe. Switch any electrical apparatus connected to the Reverse Osmosis system back to on. Allow the water to run for several minutes before turning the tap connected to the RO unit off and turning the tank valve back to the on position after a few minutes you will be able to enjoy refreshing reverse osmosis water